



QUERCUS & Co.

The SUKETCHI II Collection



SUKETCHI Story

The **SUKETCHI II - Colour Refresh** revisits one of our most beloved collections with a fresh sensitivity. First released in 2017, the Suketchi Collection was inspired by the Japanese woodblock tradition of Ukiyo-e, which translates to '*pictures of the floating world*'. These designs were never just decorative; they were expressive sketches of fleeting natural moments. A sky shifting with clouds. The sudden burst of rain. Blossoms lit from behind by sunlight. They captured not just nature's appearance, but its feeling.

Suketchi II deepens this expression through a refined new palette – softer, more nuanced, and grounded in the tones of the natural world. The colours were chosen to enhance the emotional register of each design: the stillness, the movement, the strength, or serenity. Gentle pinks and chalky whites wash across Halcyon, reflecting early morning mist. Moody greens and ocean blues add depth to the powerful sweep of Tempest. Mustard golds and petal pinks bring warmth to Sunlit's cherry blossoms, while Windswept pulses with motion in tones of terracotta and ochre.

What sets Suketchi apart is its unique painterly technique. Every design begins as a fluid wash of ink, applied in one sweep. The motifs – clouds, cranes, blossoms, or rain – are left unpainted, seemingly cut from the colour in the tradition of woodblock printing. This use of negative space allows the forms to take shape, giving each pattern both lightness and graphic presence.

With this refresh, we've also introduced half-scale versions of all six patterns on our printed linen. The smaller repeat offers a more intimate scale for soft furnishings – ideal for cushions, lampshades, and smaller upholstered pieces – without losing the impact of the original artwork. The wallpapers, meanwhile, retain their large-scale format, preserving the expansive, immersive quality that defines them.

The six designs in the collection each represent a distinct mood and rhythm:

- **Starlit** captures the stillness of a night sky, three cranes soaring beneath scattered stars – a symbol of grace and hope.
- **Halcyon** features soft clouds drifting across open sky, evoking calm and clarity.
- **Cloudburst** is the drama of a sudden downpour, its vertical strokes filled with movement and release.
- **Windswept** surges with energy, echoing tall grasses bending in the wind.
- **Tempest** conveys the raw strength of the sea, its waves in constant, rhythmic motion.
- **Sunlit** filters delicate light through cherry blossoms – an image of gentleness and renewal.

Together, these designs form more than a collection – they form a language of emotion and atmosphere. Suketchi II is a way of seeing and feeling the natural world, distilled into pattern. It invites stillness, embraces movement, and turns quiet moments into lasting impressions.

- Adam Jones
Quercus & Co.











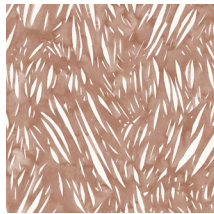
WALLPAPER PATTERNS & COLOURS

WALLPAPER - FLEECE

Our wallpaper is a strong, lightweight, breathable, non-woven fleece. It has an extra matt finish with a fine texture.

It's washable with soapy water and a soft cloth, perfect for powder rooms and light commercial interiors.

We print in-house in Sydney with eco-solvent inks for durability and light resistance.



WINDSWEPT in Hishi
WPFWS-402



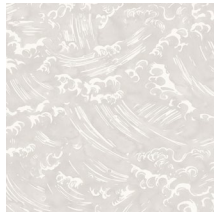
WINDSWEPT in Kusa
WPFWS-403



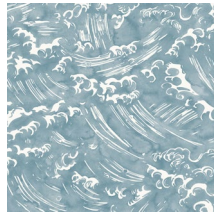
WINDSWEPT in Ko
WPFWS-404



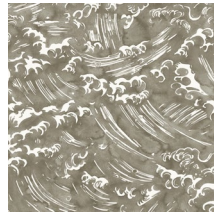
WINDSWEPT in Susuki
WPFWS-405



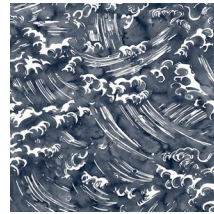
TEMPEST in Silver
WPFTEM-406



TEMPEST in Umi
WPFTEM-407



TEMPEST in Storm
WPFTEM-408



TEMPEST in Ao Blue
WPFTEM-182



SUNLIT in Shadow
WPFSL-409



SUNLIT in Hana
WPFSL-410



SUNLIT in Mori
WPFSL-411



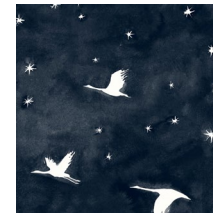
SUNLIT in Raindrop
WPFSL-412



STARLIT in Garnet
WPFSTA-413



STARLIT in Hoshi
WPFSTA-414



STARLIT in Ao Blue
WPFSTA-182



STARLIT in Hane
WPFSTA-415



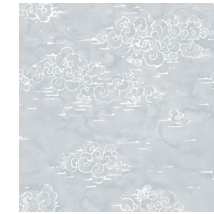
HALCYON in Dusk
WPFHAL-416



HALCYON in Evening Blush
WPFHAL-417



HALCYON in Airy
WPFHAL-418



HALCYON in Celeste
WPFHAL-183



CLOUDBURST in Kinari
WPFCLD-419



CLOUDBURST in Celeste
WPFCLD-183



CLOUDBURST in Silk
WPFCLD-420



CLOUDBURST in Kasumi
WPFCLD-421

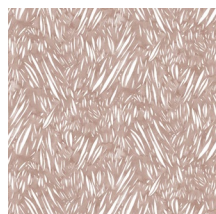
FABRIC PATTERNS & COLOURS

FABRIC – BELGIAN LINEN

Our fabric is printed onto one fabric base, a 100% genuine Belgian linen. We directly import the linen from one of the oldest mills in Belgium.

It's a smooth, medium to heavy-weight 320g/m2, sturdy enough for light upholstery, soft enough for cushions and pillows, with a beautiful drape for curtains.

We print all our fabric in-house using water-based pigment ink.



WINDSWEPT Half-Scale in Breeze
FBWSHS-422



WINDSWEPT Half-Scale in Drift
FBWSHS-423



WINDSWEPT Half-Scale in Flaxen
FBWSHS-424



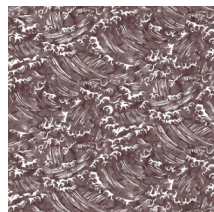
WINDSWEPT Half-Scale in Asagi
FBWSHS-425



TEMPEST Half-Scale in Silver
FBTEMHS-439



TEMPEST Half-Scale in Drift
FBTEMHS-423



TEMPEST Half-Scale in Siren
FBTEMHS-426



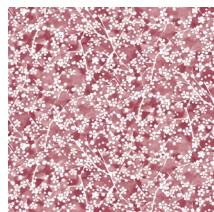
TEMPEST Half-Scale in Mizu
FBTEMHS-427



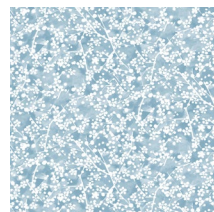
SUNLIT Half-Scale in Hikari
FBSLHS-428



SUNLIT Half-Scale in Toro
FBSLHS-429



SUNLIT Half-Scale in Cherry
FBSLHS-430



SUNLIT Half-Scale in Sora
FBSLHS-431



STARLIT Half-Scale in Lira
FBSTAHS-432



STARLIT Half-Scale in Hane
FBSTAHS-415



STARLIT Half-Scale in Deep Crimson
FBSTAHS-433



STARLIT Half-Scale in Golden
FBSTAHS-434



HALCYON Half-Scale in Sunset
FBHALHS-435



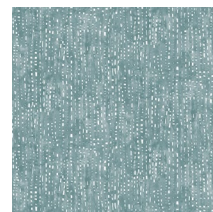
HALCYON Half-Scale in Airy
FBHALHS-418



HALCYON Half-Scale in Celeste
FBHALHS-183



HALCYON Half-Scale in Akari
FBHALHS-436



CLOUDBURST Half-Scale in Peacock
FBCLDHS-437



CLOUDBURST Half-Scale in Veil
FBCLDHS-438



CLOUDBURST Half-Scale in Lira
FBCLDHS-432



CLOUDBURST Half-Scale in Celeste
FBCLDHS-183

AUSTRALIAN SHOWROOMS

NSW & ACT

ELLIOTT CLARKE
15-19 Boundary Street
Rushcutters Bay, NSW 2011
Tel: +61 (02) 9361 6199
nsw@elliottclarke.com.au
www.elliottclarke.com.au

SA

ELLIOTT CLARKE
C/o Abbode Interior Products
148 Magill Rd, Norwood, SA 5067
Tel: +61 (08) 8362 9909
info@abbode.com.au
www.elliottclarke.com.au

WA & NT

ELLIOTT CLARKE
C/o Décor Design
185 Hay Street, Subiaco, WA 6008
Tel: +61 8 9328 1077
info@decordesign.com.au
www.elliottclarke.com.au

VIC & TAS

ELLIOTT CLARKE
441 High Street
Pahran, VIC 3181
Tel: +61 (03) 9516 3333
vic@elliottclarke.com.au
www.elliottclarke.com.au

QLD

ELLIOTT CLARKE
Unit 2/269 Abbotsford Rd
Bowen Hills, QLD 4006
Tel: +61 (07) 3852 1107
qld@elliottclarke.com.au
www.elliottclarke.com.au

INTERNATIONAL SHOWROOMS

UNITED STATES

TX

SUPPLY SHOWROOM
1513 West 6th Street
Austin, Texas 78703
Tel: 512 770 6211
orders@supplyshowroom.com
www.supplyshowroom.com

NY / CT / NJ

STUDIO FOUR
900 Broadway #201,
New York, NY 10003
Tel: 212 475 4414
hello@studiofournyc.com
www.studiofournyc.com

CA

HARBINGER
752 North La Cienega Blvd.
West Hollywood, California 90069
Tel: 310 858 6884
info@HarbingerLA.com
www.harbingerla.com/home

IL / MI / MO / MN / WI

SOLID + PATTERN
3636 S. Iron Street #C451,
Chicago, IL 60609
Tel: 773 412 9405
liisa@solidandpattern.com
www.solidandpattern.com

AZ

DEB DESIGN SOURCE
2708 North 68th St., Suite 4-5,
Scottsdale, AZ 85257
Tel: 480 694 7597
deb@debdesignsource.com
www.debdesignsource.com

CO

WALL TAWK
1429 Detroit Street
Denver, CO 80206
Tel: 917 450 5066
hello@walltawk.com
www.walltawk.com

OK / KY / PN / IN

MICHI PATTERNS
Showrooms coming soon to
Columbus, Ohio
Tel: 614 648 9624
info@michipatterns.com
www.michipatterns.com

GA / SC / NC / AL / TN / MS

THE DESIGN SOCIAL STUDIO
400 Trabert Ave NW, Suite B-200
Atlanta GA 30309
Tel: (434) 258-6632
brooks@thedesignsocialstudio.com
www.thedesignsocialstudio.com

CANADA

ON

MEMO SHOWROOM
275 Macpherson Avenue, Suite 103
Toronto ON M4V 1A4
Tel: 647 350 3700
hello@memoshowroom.com
www.memoshowroom.com



QUERCUS & Co.

Quercus & Co
Unit 42/8 Jullian Close
Banksmeadow NSW 2019
Australia
www.quercusandco.com
  @quercusandco