



The Drawing Room
COLLECTION

The Story

An exploration of florals & the quiet charm of unexpected details.

The Drawing Room Collection takes its name from a space historically devoted to leisure, creativity and thoughtful exchange. In the 18th century, the drawing room was not a place of formality, but one used for drawing, reading, needlework, collecting and conversation. It was a space shaped by handwork and reflection - and it is this atmosphere the collection draws from.

Woven through the designs is a reference to 18th-century decorative textiles, where florals were embroidered and layered with care, and where pattern carried both ornament and meaning. Each design balances looseness with intention, drawing on the rhythms of historic weaving and stitched embellishment.

The patterns reveal themselves slowly, inviting a second look. Botanical motifs - petals, thorns, fruit clusters, soft stripes and wandering organic forms - are reimagined within the world of interiors. The designs suggest

what might be sketched, studied or carefully rendered in the drawing room: nature observed, translated and held in pattern.

Adam Jones turns his hand-drawn practice towards a new direction, introducing a finer, scratchier finish that lends a delicate energy to every line. The collection carries a strong sense of paperiness and texture, expressed through softened colour, chalky tones and subtle shifts in density. Colours feel gently worn and lightly absorbed, as though settled into the surface of paper, lending the designs a sense of age, restraint and quiet depth.

These patterns celebrate the pleasure of discovery - a hidden fruit among foliage, a twist of vine, a thorn tucked beneath a bloom. Rooted in the traditions of botanical illustration and historic textiles, the collection moves these references somewhere quieter, more intimate and distinctly contemporary.





Our Materials

Beautifully printed wallpaper & fabric.

We are a design and print house, dedicated first and foremost to beautifully printed wallpaper and fabric. Printing to order gives us full control of the manufacturing process, enabling us to minimise wastage while offering the flexibility to customise scale and colour for each client and project. This balance of craft, care and adaptability sits at the heart of our practice.

Committed to quality without compromise, we draw on social and environmental capital thoughtfully and responsibly. Our papers, fabrics and inks are non-toxic, ethically sourced and selected for their exceptional performance and longevity. All printing is carried out in-house and samples are produced from offcuts to further reduce waste. By operating outside the cycles of fast fashion and throwaway culture, we strive to create timeless designs - considered, enduring and made to bring quiet joy for years to come.

WALLPAPER - FLEECE

Our wallpaper is a strong, lightweight, breathable, non-woven fleece. It has an extra matt finish and fine texture.

It is washable with soapy water and a soft cloth, perfect for powder rooms and light commercial interiors.

We print in-house in Sydney with eco-solvent inks for durability and light resistance.

FABRIC - BELGIAN LINEN

Our fabric is printed onto 100% genuine Belgian linen, directly imported from one of the oldest mills in Belgium.

A smooth, medium to heavy-weight 320g/m², it is sturdy enough for light upholstery, soft enough for cushions and pillows, with a beautiful drape for curtains.

We print all fabric in-house using water-based pigment ink.







Flora

A loosely meandering floral trail of flowers, fruit, and foliage, drawn in varied pen and ink lines and inspired by the abundance and movement of 18th-century Indienne chintz.

Flora is drawn with scratchy pen and ink lines that give the design a worked, tactile quality. Stems branch freely across the surface into an abundant assortment of spiky, thistle-like flower heads, star-shaped blossoms, seed pods, strawberries, small fruits and trailing leaves - generous in scale and full of movement.

The line work varies throughout - some marks confident and fully resolved, others softening and thinning, as though revisited or allowed to fade. Small details - dotted seed heads, serrated leaves, tucked-away fruit - reward closer looking.

WALLPAPER - FLEECE



FLORA in
Port Wine
Code WPFLO-447



FLORA in
Garden Room
Code WPFLO-446



FLORA in
Clay Pot
Code WPFLO-445



FLORA in
Sun Bleached
Code WPFLO-444



FLORA in
Powder Blue
Code WPFLO-86

FABRIC - BELGIAN LINEN



FLORA in
Delftware
Code FBLO-466



FLORA in
Lamp Black
Code FBLO-73



FLORA in
Sage
Code FBLO-465



FLORA in
Ochre
Code FBLO-25



FLORA in
Crushed Berry
Code FBLO-467

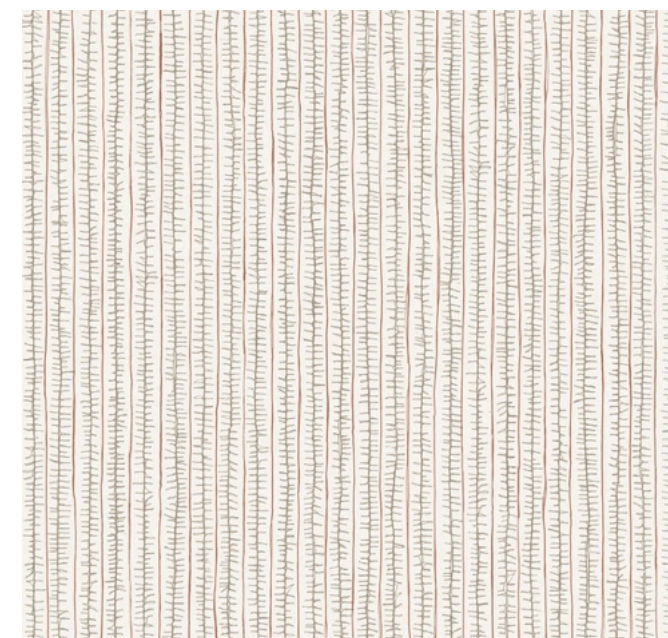
Stitch

A fine vertical stripe with subtle stitched detailing, echoing the logic of hand weaving and embroidery found in 18th-century domestic textiles.

Stitch is composed of finely drawn vertical stripes, built from narrow lines edged with small horizontal marks. Two colours layer across the surface - a fine ground line beneath a darker stitched stripe - giving the design a quiet richness that reveals itself gradually. From a distance it reads as a classic pin stripe; up close, the hand-drawn detail introduces rhythm and warmth.

Narrow stripes were fundamental to 18th-century woven linens and domestic textiles, valued for their practicality, clarity and versatility. The stitched effect here echoes the logic of hand weaving and embroidery from the period, where construction and decoration were closely intertwined. Quiet and confident, Stitch speaks to fabric, handwork and the beauty of small irregularities. Practical and subtly expressive, it suits a wide range of interiors, bringing order without austerity.

WALLPAPER - FLEECE



STITCH in
Fennel Seed
Code WPFST-456



STITCH in
Ribbon
Code WPFST-458



STITCH in
Cornflower
Code WPFST-455

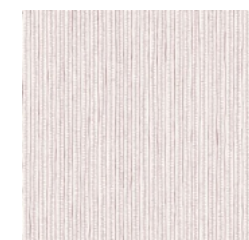


STITCH in
Honeycomb
Code WPFST-457

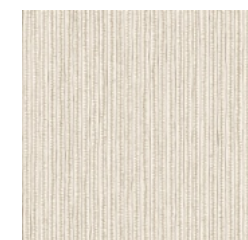


STITCH in
Sumac
Code WPFST-459

FABRIC - BELGIAN LINEN



STITCH in
Mauve
Code FBST-477



STITCH in
Fern
Code FBST-479



STITCH in
Mantel
Code FBST-478



STITCH in
Mulberry
Code FBST-476



STITCH in
Beeswax
Code FBST-480

Meander

A pattern of abstracted leaves winding through a zig-zagging framework, drawing on the movement and playful geometry of Rococo design.

Meander takes its cue from the scrolling frameworks and playful geometry of 18th-century decorative pattern - a tradition that favoured movement and lightness over strict formality.

Hand-sketched in ink, spiky starburst forms wind through a bold zig-zagging framework of striped vines. The repeat is orderly in structure yet loosened by the hand-drawn line, allowing the drawing to breathe and the negative space to do its work.

Decorative, expressive and joyously playful, Meander brings energy to a room without ever losing its sense of order.

WALLPAPER - FLEECE



MEANDER in
Rosewater
Code WPFMEA-450



MEANDER in
Laurel
Code WPFMEA-451



MEANDER in
Nutmeg
Code WPFMEA-449



MEANDER in
Quill
Code WPFMEA-448



MEANDER in
Indigo
Code WPFMEA-12

FABRIC - BELGIAN LINEN



MEANDER in
Morning Blue
Code FBMEA-470



MEANDER in
Worn Leather
Code FBMEA-468



MEANDER in
Cherry
Code FBMEA-430



MEANDER in
Inkwell
Code FBMEA-440



MEANDER in
Peony
Code FBMEA-469

Bower

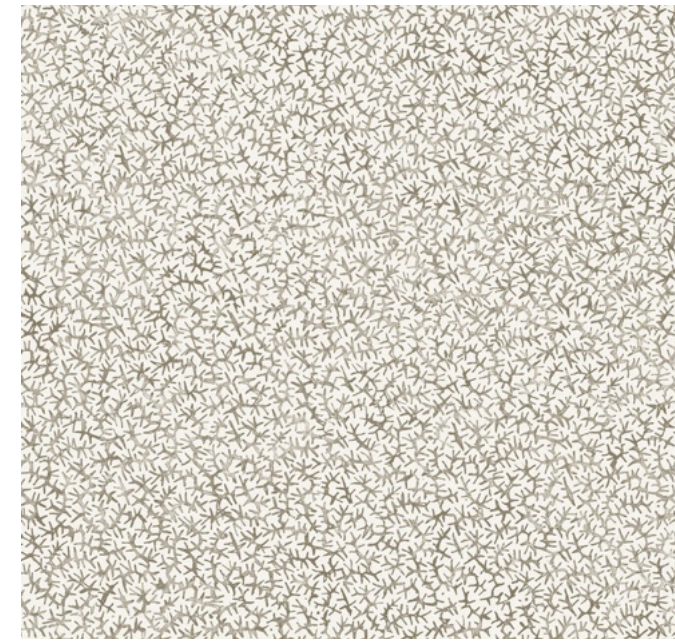
A dense, all-over field of branching ink marks, built through repetition to create a richly textured ground inspired by historic decorative surfaces and stitched embroidery.

Bower forms a dense, all-over field of branching pen and ink marks - thorns, twigs, coral fragments. Built through repetition rather than motif, the surface feels richly textured and tactile, each mark contributing to a cohesive whole.

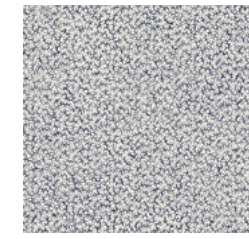
The design draws on coral-like textures used as decorative grounds in 18th-century ornament, and echoes the dense stitched grounds of 19th-century embroidery, where surface interest came through accumulation and patience rather than imagery alone.

Read at scale, the sharpness of each individual mark softens into something more enveloping - a backdrop that brings depth and texture to an interior without demanding attention, and sits beautifully alongside more decorative patterns.

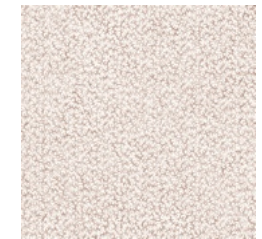
WALLPAPER - FLEECE



BOWER in
Khaki
Code WPFBOW-136



BOWER in
Inkwell
Code WPFBOW-440



BOWER in
Soft Clay
Code WPFBOW-442

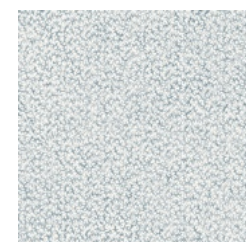


BOWER in
Limestone
Code WPFBOW-441



BOWER in
Wedgewood
Code WPFBOW-443

FABRIC - BELGIAN LINEN



BOWER in
Chambray
Code FBBOW-462



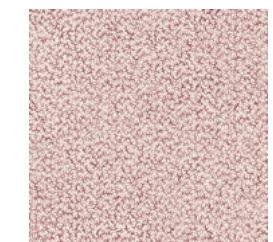
BOWER in
Hawthorn
Code FBBOW-463



BOWER in
Golden Husk
Code FBBOW-460



BOWER in
Coffee Bean
Code FBBOW-464



BOWER in
Damson
Code FBBOW-461

Settle

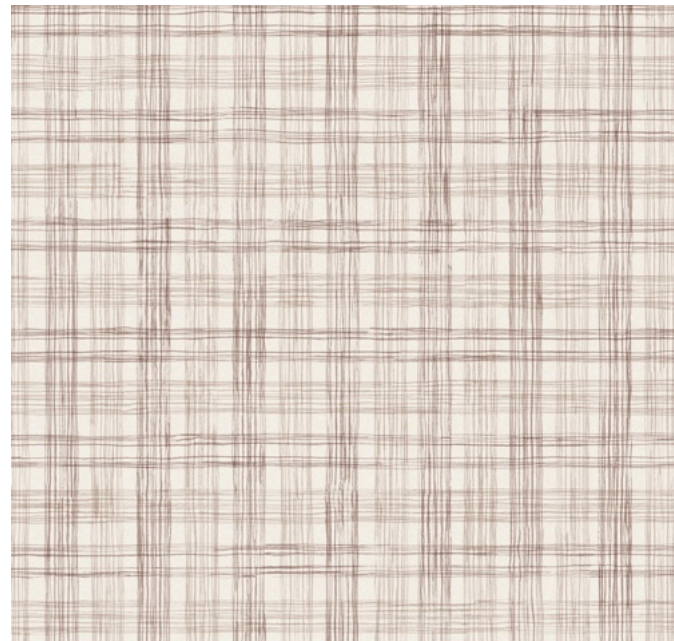
A hand-drawn check formed from intersecting lines that wobble and vary in density, reinterpreting 18th-century woven checks through rhythm and textile-like irregularity.

Settle is built from intersecting horizontal and vertical lines that form a loose, open check. Lines wobble, double back and vary in density, creating a surface that feels soft and textile-like.

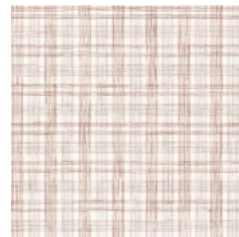
It is a modern interpretation of 18th-century woven checks - prevalent in handloomed fabrics of the period, where irregularities in thread, tension and alignment gave them character. The drawn line echoes this quality, precision intentionally relaxed in favour of warmth and tactility.

Two tonal colours interweave across the surface, producing subtle shifts in rhythm and weight. Generous in scale and calm in feeling, Settle grounds a space without overpowering it.

WALLPAPER - FLEECE



SETTLE in
Chestnut
Code WPFSE-124



SETTLE in
Copper Thread
Code WPFSE-454



SETTLE in
Dust
Code WPFSE-452

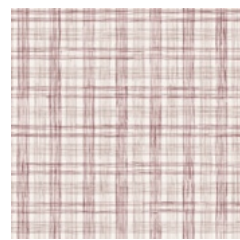


SETTLE in
Thistle
Code WPFSE-155

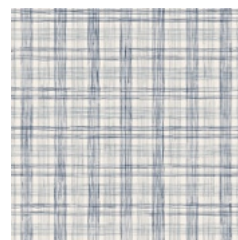


SETTLE in
Quilt Blue
Code WPFSE-453

FABRIC - BELGIAN LINEN



SETTLE in
Madder
Code FBSE-474



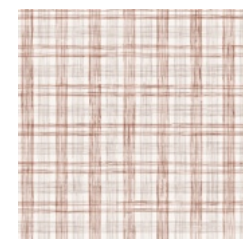
SETTLE in
Scholar's Blue
Code FBSE-471



SETTLE in
Clove
Code FBSE-473



SETTLE in
Parlour
Code FBSE-472



SETTLE in
Kiln
Code FBSE-475







Showrooms

Available through our trusted network of global showroom partners.

AUSTRALIA

ACT & NSW

ELLIOTT CLARKE
15-19 Boundary Street
Rushcutters Bay NSW 2011
Tel: +61 (02) 9361 6199
nsw@elliottclarke.com.au
www.elliottclarke.com.au

NT & WA

ELLIOTT CLARKE
C/O Décor Design
185 Hay Street
Subiaco, WA 6008
Tel: +61 8 9328 1077
info@decordesign.com.au
www.elliottclarke.com.au

QLD

ELLIOTT CLARKE
Unit 2/269 Abbotsford Rd
Bowen Hills, QLD 4006
Tel: +61 (07) 3852 1107
qld@elliottclarke.com.au
www.elliottclarke.com.au

SA

ELLIOTT CLARKE
C/O Abbode Interiors
148 Magill Rd
Norwood, SA 5067
Tel: +61 (08) 8362 9909
info@abbode.com.au
www.elliottclarke.com.au

TAS & VIC

ELLIOTT CLARKE
441 High Street
Prahran VIC 3181
Tel: +61 (03) 9516 3333
vic@elliottclarke.com.au
www.elliottclarke.com.au

INTERNATIONAL

UNITED STATES

AL/ GA/ MS/ NC/ SC/ TN

THE DESIGN SOCIAL
STUDIO
400 Trabert Ave NW,
Suite B-200
Atlanta GA 30309
Tel: (434) 258 6632
brooks@thedesignsocialstudio.com
www.thedesignsocialstudio.com

AZ

DEB DESIGN SOURCE
2708 N 68th St., Suites 4-5
Scottsdale AZ 85250
Tel: (480) 694 7597
deb@debdesignsource.com
www.debdesignsource.com

CA

HARBINGER
752 North La Cienega Blvd.
West Hollywood,
California 90069
Tel: (310) 858 6884
info@HarbingerLA.com
www.harbingerla.com/home

CO

WALL TAWK
1429 Detroit Street
Denver CO 80206
Tel: (917) 450 5066
hello@walltawk.com
www.walltawk.com

CT/ NJ/ NY

STUDIO FOUR
900 Broadway #201
New York NY 10003
Tel: (212) 475 4414
hello@studiofournyc.com
www.studiofournyc.com

KY / IN/ OH/ PN

MICHI PATTERNS
1636 Oak Street, Suite 204
Columbus, OH 43205
Tel: (614) 245 5004
info@michipatterns.com
www.michipatterns.com

TX

SUPPLY SHOWROOM
1513 West 6th Street
Austin Texas 78703
Tel: (512) 770 6211
orders@supplyshowroom.com
www.supplyshowroom.com

CANADA

ON

MEMO SHOWROOM
275 Macpherson Avenue, Suite 103
Toronto ON M4V 1A4
Tel: (647) 350 3700
hello@memoshowroom.com
www.memoshowroom.com

QUERCUS & Co.

1A/1-7 Unwins Bridge Road
St Peters NSW 2044 Australia
quercusandco.com
@quercusandco
studio@quercusandco.com